

## LIGHT TECHNOLOGY

LED

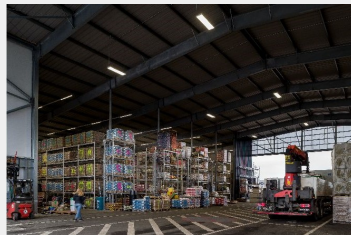
<b>System Power:</b>	98W / 147W / 196 W
<b>Colour Temperature:</b>	4000K
<b>Luminaire Flux:</b>	14192Lm / 21288Lm / 28384Lm
<b>Colour Rendering Index (CRI):</b>	>80
<b>Luminaire Efficiency:</b>	145Lm/W
<b>Beam Angle:</b>	Direct narrow / Wide distribution
<b>Protection Rating Class (IP):</b>	IP65 , I
<b>Colour:</b>	traffic White RAL 9016
<b>Weight:</b>	7.3Kg / 10.3Kg / 13.1Kg
<b>Dimensions:</b>	L:688 x W:340 x H:59mm / L:1013 x W:340 x H:59mm / L:1338 x W:340 x H:59mm
<b>Gear:</b>	ON/OFF , DALI



## DETAILS

### APPLICATION

Industrial Lighting



## MANUFACTURER

# REGIOLUX

## COUNTRY OF ORIGIN



## WORKER IP65

WORKER is a high-capacity luminaire that is durable and versatile when it comes to dealing with all the pressures of everyday situations. This luminaire is really durable as dirt and water have minimal effect on it. Its robustness is provided by a laser-welded steel housing which does not need to be re-opened for installation. Lighting technology with Individual Lens Optic (ILO) guarantees flexibility with different lumen packages. The Worker is a genuine energy bar for high space lighting requirements. Also available with DALI system.