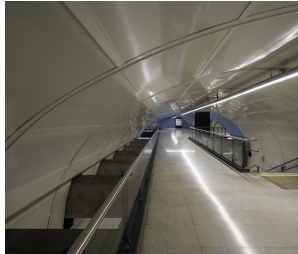
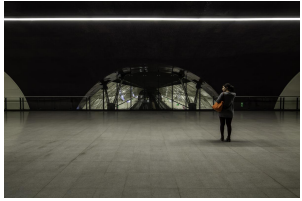




## LIGHT TECHNOLOGY

LED

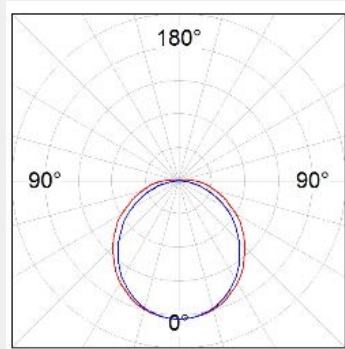
<b>System Power:</b>	44W
<b>Colour Temperature:</b>	4000K
<b>Luminous Flux:</b>	4440Lm
<b>Colour Rendering Index (CRI):</b>	>80
<b>Luminaire Efficiency:</b>	97.6Lm/W
<b>Weight:</b>	8.71Kg
<b>Protection rating. Class:</b>	IP42 , I
<b>Colour:</b>	Grey
<b>Dimensions:</b>	L:1.137 x W:170 x H:146mm



### DETAILS

#### APPLICATION

Street Lighting



### MANUFACTURER

**LAMP**  
Image not found or type unknown

### COUNTRY OF ORIGIN

**SPAIN**

## STGO

Structure model STGO by LAMP brand. Made of matt grey lacquered aluminium extrusion opal. Model for LED MID-POWER with neutral white colour temperature and control gear included. IP42 protection rating. Insulation class I.