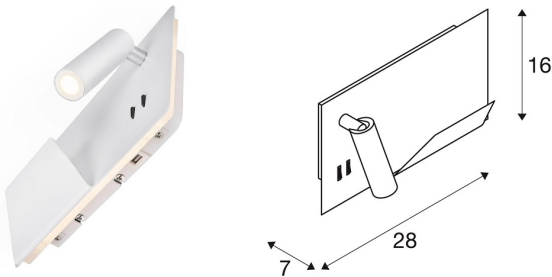


LIGHT TECHNOLOGY WALL LUMINAIRE



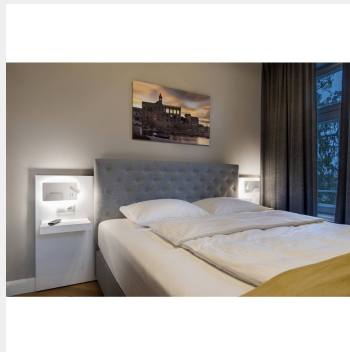
System Performance:	15W
Temperature :	3000K
Luminous Flux:	770lm
Luminous Efficiency:	51.3 lm/W
CRI:	90
Lifespan:	30000hr
Beam Angle:	110 / 340 °
Dimensions:	W: 28cm H: 16cm D: 7cm
Voltage - Frequency:	100-240V ~50/60Hz`
:	
Protection Class:	IP20, UI



DETAILS

APPLICATION

Interior & Architectural
Lighting



MANUFACTURER



COUNTRY OF ORIGIN



SOMNILA

Developed as an ideal bedside or reading light, the SOMNILA light series provides an innovative and user-friendly luminaire concept. The elegant surface-mounted wall light is made from white or black coated aluminium and impresses with its professionally manufactured mechanics, combined with modern LED technology. Equipped with a USB connection and the necessary Smartphone holder, the luminaire provides real added value.

The spotlight can be individually directed, therefore providing ideal and accurate illumination. The second light source is used for general lighting. If necessary, the two light sources of the luminaire, which are separated by the built-in switch, can be switched separately. The luminaires are available in versions for left-hand and right-hand mounting so that they can be perfectly integrated in the room. The luminaire includes built-in LED lamps.