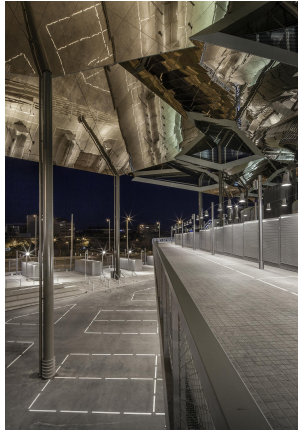




LIGHT TECHNOLOGY

LED

System Power:	44W
Colour Temperature:	3000K / 4000K
Luminous Flux:	4179Lm / 4400Lm
Colour Rendering Index (CRI):	>80
Luminaire Efficiency:	87.1Lm/W / 91.7Lm/W
Weight:	8.6Kg
Protection rating. Class:	IP65 , I
Colour:	Grey
Dimensions:	L:425 x W:290 x H:290mm



DETAILS

APPLICATION

Street Lighting



MANUFACTURER

LAMP

Image not found or type unknown

COUNTRY OF ORIGIN

SPAIN

SHOT 290

Outdoor projector SHOT 290 by LAMP. Made of gray lacquered cast aluminum, with forged glass, stainless steel screws and silicone seal. Passive diffusion for thermal management. HI-POWER LED model, with Warm white and White cold color temperature and control equipment.