



LIGHT TECHNOLOGY

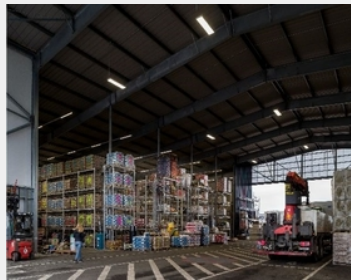
LED

System Power:	68W
Colour Temperature:	4000K
Luminous Flux:	11615Lm
Colour Rendering Index (CRI):	>80
Luminaire Efficiency:	170Lm/W
Lighting Distribution:	Direct extremely wide distribution
Protection rating. Class:	IP54 , I
Colour:	traffic White
Weight:	1.9Kg
Dimensions:	L:1531 x W:55 x H:37mm
Gear:	DALI

DETAILS

APPLICATION

Industrial Lighting



MANUFACTURER

REGIOLUX

COUNTRY OF ORIGIN



SDG SOXB IP54

SDG SOXB IP54 is a high-capacity luminaire that is durable and versatile when it comes to dealing with all the pressures of everyday situations. This luminaire is really durable as dirt and water have minimal effect on it. Quick-fit mounting system, IP54 device mount, Modullänge/1500. Device mount made of galvanised, profiled sheet steel, surface coated with polyester resin enamel. Toolless fastening with two integrated pressure locks. Lighttechnical element with transparent seal, end faces made of plastic, all-round closed seal to mounting rail. Housing colour traffic white RAL 9016; Direct, extremely wide-beam light distribution using individual LED lens optic made of PMMA plastic. Continuous optics. Uniform LED spacing, even across the gap between circuit boards. 3-row LED arrangement. Light control components are easy to maintain thanks to the easily cleaned surface. Heat-resistant cables including fixed 5-pole rapid installation plug connector with toolless phase pre-selection and locating finger. The SDG SOXB IP54 is a genuine energy bar for high space lighting requirements. Available with DALI system.