



LIGHT TECHNOLOGY
Lighting Distribution:

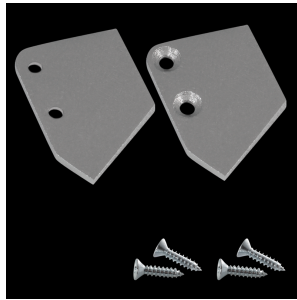
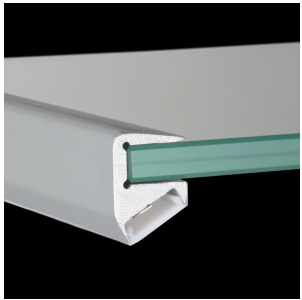
Cover Shapes: Flat / Break-proof Flat
 Cover Versions: Clear / Frost / Milky (opal)

Color:

Anodized Aluminium / RAL 9016 / RAL 9005

Dimensions:

L: 1000 - 5000 mm
 W: 17,4 mm
 H: 22,7 mm (S Line Glass 6mm)
 H: 24,7 mm (S Line Glass 8mm)



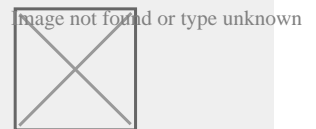
DETAILS

APPLICATION

- Retail Lighting
- Architectural Lighting
- Interior Lighting



MANUFACTURER



COUNTRY OF ORIGIN



S-LINE GLASS

The PROLED aluminium profiles are the perfect addition to the PROLED FLEX STRIPS. The FLEX STRIPS can be glued into the profile. The aluminum profiles are in anodized aluminium available. The profile can simply be sawn to any required length or ordered in the required custom length. Different versions of Aluminium profiles and different shapes of plastic covers are available. In addition we offer a wide range of accessories. S-LINE GLASS (for shelf illumination) Flat plastic covers are available in following versions: crystal clear frost (semitransparent) milky frost (opal).