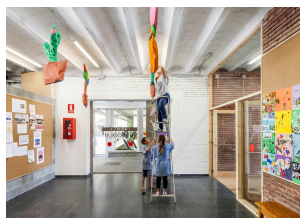




LIGHT TECHNOLOGY

LED

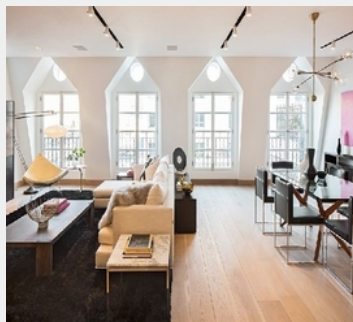
System Power:	17W / 41W
Colour Temperature:	3000K / 4000K
Luminous Flux:	2.278Lm / 6.299Lm
Colour Rendering Index (CRI):	>80
Luminaire Efficiency:	118.6Lm/W / 137.5Lm/W
Lighting Distribution:	Direct , Symmetric
Weight:	2.38Kg / 3.60Kg
Protection rating. Class:	IP20 , I
Colour:	White
Dimensions:	M:1.162 x Ø:80mm / M:1.743 x Ø:80mm



DETAILS

APPLICATION

Office Lighting
Interior & Architectural
Lighting



MANUFACTURER



COUNTRY OF ORIGIN

SPAIN

LAMPTUB 80

Suspended or mounted surface luminaire model LAMPTUB 80 by LAMP brand. Made of matt white painted extruded aluminium with opal polycarbonate diffuser. Model for LED MID-POWER with neutral white colour temperature and control gear included. IP20 protection rating. Insulation class I.