



LIGHT TECHNOLOGY WALL LUMINAIRE

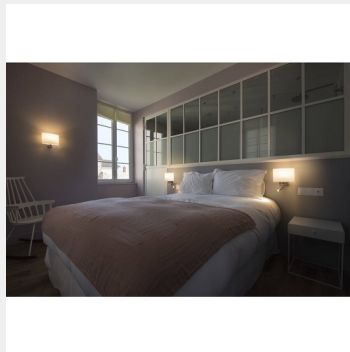
System Performance:	2W
Temperature :	3000K
Luminous Flux:	200lm
Luminous Efficiency:	100lm/W
Lifespan:	30000hr
Pan/Tilt:	180°
Dimensions:	W: 21.5cm H: 25cm D: 15.5 cm
Voltage - Frequency:	100-240V ~50/60Hz
Protection Class:	IP20, I



DETAILS

APPLICATION

Interior & Architectural
Lighting



MANUFACTURER



COUNTRY OF ORIGIN



KENKUA

The KENKUA SPOT WL impresses with a successful combination of steel and glass elements and, as well as being the main light source, it is equipped with a LED reading light with a warm white light colour. With the beam angle selected for the LED reading light, it is almost glare-free and thereby ensures a comfortable light which relaxes the user.

Thanks to the tilting and swivelling joint piece, the LED can be appropriately aligned. The E27 lamp socket behind the main lampshade and the built-in LED converter make the KENKUA SPOT WL ready for direct connection to the 230V mains power supply. The luminaire contains built-in LED lamps.