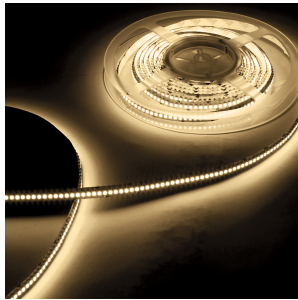
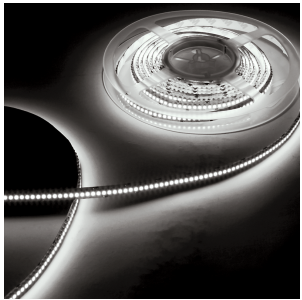


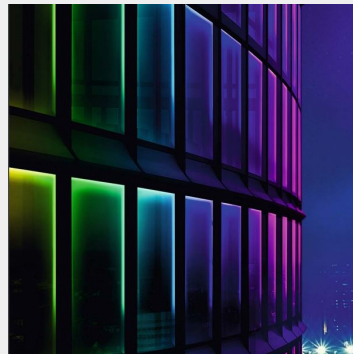
**LIGHT TECHNOLOGY**  
LED STRIPS



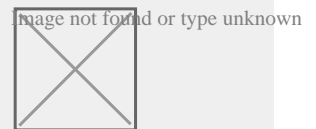
## DETAILS

### APPLICATION

Retail Lighting  
Architectural Lighting  
Interior Lighting



## MANUFACTURER



## COUNTRY OF ORIGIN



## FLEX STRIP IP53 1200 HE MONO

The PROLED FLEX STRIPS are perfect for indirect lighting, as custom made versions for fair or shop applications as well as for all kinds of illumination. Due to their shallow design and the individually adaptable lengths the PROLED FLEX STRIPS offer a wide spectrum of application possibilities. 3 colours in one LED, therefore 100% smooth colour mixing. High flexibility – adaptable to round shapes. Also available in 20 m reels. Please pay attention to the maximum length (5 m) per power input. Installation with 3M adhesive tape on the strip's backside (self adhesive). dimmable, autom. colour change, DMX 512, DALI, 1-10 V, KNX controllable by MBNLED RGB MULTI power supplies/controller