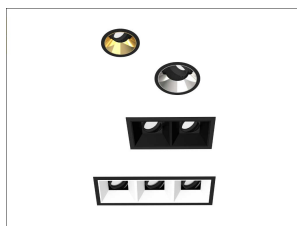
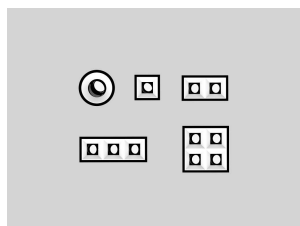


LUMINAIRE TYPE

RECESSED

System Performance:	9.2W - 20W
Temperature :	3000K - 4000K
Luminous Flux:	605lm - 1382lm
CRI:	>90
Beam Angle:	24° - 27° - 42° - 50°
Driver:	Dali or Low/High non-dim
Dimensions:	Small: Square 68x68mm, Round 148mm - Medium: Square 96x96mm, Round 171mm
Pan/Tilt:	Vertical: 355° Horizontal: 30°

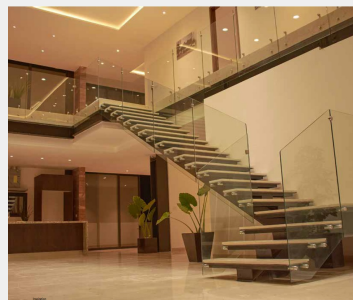


DETAILS

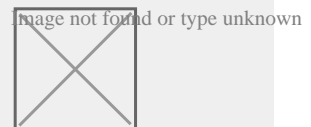
APPLICATION

Architectural Lighting

Retail Lighting



MANUFACTURER



COUNTRY OF ORIGIN:
AUSTRIA

DIVA

Diva is rightly in the spotlight: the LED recessed spotlight is not only available in round and square shapes but also in combined angular settings. In addition, there is a choice of different sizes and a variety of colours for the secondary reflector (incl. high-gloss metallic-look coatings).

Beyond the optics, Diva impresses with high visual comfort, natural colour rendering and LED technology of the latest generation.

Diva can also be rotated up to 355° and tilted up to 30° for perfect focus.

[Product Brochure](#)