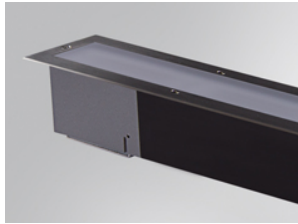


LIGHT TECHNOLOGY

LED



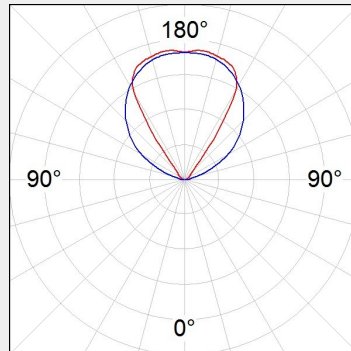
System Power:	19W / 78W
Light Colour:	3000K / 4000K / RGBW
Luminous flux:	up to 7903Lm
Colour rendering index (CRI):	>80
Luminaire Efficiency:	up to 105.37Lm/W
Lighting Distribution:	Symmetric / Asymmetric / Opal / Wallwasher
Weight:	5.17Kg / 9.28Kg
Protection rating. Class:	IP67 , I
Colour:	Black
Dimensions:	L:1.043 x W:106 x H:84mm L:2.036 x W:106 x H:84mm



DETAILS

APPLICATION

Outdoor Lighting



MANUFACTURER



COUNTRY OF ORIGIN

SPAIN

BAZ

Outdoor recessed luminaire model BAZZ REC OPAL 1M 4200 WW, from LAMP brand. Made of matt black anodized extruded aluminium. AISI304 stainless steel frame and opal tempered glass. Model for MID-POWER LED, warm white colour temperature and control gear included. IP67, IK07 protection rating. Insulation class I